

Operation Manual / Spare parts list

Grooving machine KFU 830

Janser

Operation Manual

Grooving machine KFU 830 (No. 223920800)



Index

1	Preliminary notes	3
1.1	General notes for the operator	5
1.2	Guarantee and liability	5
2	Safety notes	6
2.1	In general	6
2.2	Dangerousness of the machine	6
2.3	Safety instructions (operation)	6
2.4	Designated use	6
2.5	Basic safety notes	7
2.6	Prerequisites for the user	7
2.7	Inspection in accordance with VBG 4 § 5 (1) Nr. 2	8
2.8	Safety notes noise	8
2.9	Danger of cut	8
3	General instructions for the user	8
3.1	Scope of delivery	8
3.2	Special accessories	9
3.3	Disposal	9
3.4	Dimensions/Weight/Technical details	9
4	Assembly	9
5	Transport	10
6	Operation	10
6.1	Preparing the machine	10
6.1.1	Adjustment of grooving depth	10
6.1.2	Adjustment of side wheel	11
6.1.3	Adjustment of the spring force	11
6.2	Starting the machine	12
6.3	Changing the grooving blade	13
6.4	Cleaning and maintenance	14
E	Annex E: Spare Parts List	15
E. 1	Ordering details for spare parts	15
E. 2	Example	15
E. 3	Ordering address	15
E. 4	Exploding view machine	16
E. 5	Exploding view engine	17
E. 6	Spare Parts List	18
CE	CE Declaration of conformity	19

1 Preliminary notes

Dear customer,

Thank you for buying a grooving machine KFU 830 – a professional and well-known product.

Grooving machine KFU 830 is built in reference to the latest requirements of the floor covering industry. You can cut welding grooves in PVC, corundum safety floors, Polyolefine, rubber and linoleum, as well as nap floors. The special advantage of this grooving machine is that it can follow uneven floors very easily as the depth is taken near the blade; with this you can be sure that you do not groove too deeply. Further it is powered by gear thus it is ensured to get constant power and very good grooving result. Due to the special shape of the rollers the guidance in the grooved seam is very comfortable.

Please take care of your new machine that it gives you pleasure and helps you to do a good job for a long time.



Note

Please read the operation manual carefully, in particular the safety notes and ensure that all operators read this operation manual prior to operate the machine.

Adherence to the safety notes not only helps to protect against potential dangers for health and personal safety but also prevents an improper utilisation of the machine.

Pay attention and adhere to all warning labels on the machine. Replace any missing or damaged labels immediately.

It is too late if you do it while working!

Never allow anybody without sufficient skills and knowledge to operate the machine.

This will allow you to operate the machine without running any danger and encountering any troubles. It will help you to avoid any unnecessary delays caused by repairs, and will pave the ground for an optimum utilization and operation of this equipment.

No liability for the damages which originate from the use of these operating instructions.
Changes reserve.

Janser GmbH
Böblinger Str. 91
71139 Ehningen

Telefon: 07034 / 127-0
Telefax: 07034 / 8838
info@janser.com
<http://www.janser.com>

State: June 2010

The operation manual identify important notes on safety and damage prevention using the following symbols:

Please comply with these instructions to avoid any damages and injuries. They point to a possible dangerous situation. The nonobservance can lead to the death, to heavy injuries and to material damages.



Warning!

Designates a potentially hazardous situation. Please note that failure could cause death or injuries.



Attention!

Designates a dangerous situation. Please note that failure could cause damages at products or others.



Note!

Important notes on the operation, intended for an optimum utilization of the equipment and other useful information.

*The operation manual is intended to **accompany the machine.***

The operation manual has been prepared by the manufacturer on the basis of his knowledge and experience with respect to design, production and operation.

Specific instructions of the user may be added to these operation manual (for example to refer to surveillance and reporting regulations, inter-company maintenance and inspection schedules. The inspection intervals are in accordance with VBG 4 §§ 3 and 5 und § 20 GefStoffV (Regulations of hazardous materials)).

1.1 General notes for the operator

As operator you are responsible for:

- intended use of this machine by briefed specialized staff
- adherence to safety rules
- technical briefing of any users of this machine

1.2 Guarantee and liability

The manufacturer ensures a guarantee and liability are in accordance with our currently valid general business and sales conditions. The guarantee runs out after 12 months from purchase date.

We reject any guarantee claims for tools which are not in their original condition, or for altered or changed tools or which are not used in accordance to the intended use.

We guarantee free maintenance of this machine when getting carriage paid, in case of damages due to manufacturing defects or material defects; provided that the machine is correct used and not changed or altered. Wearing parts are not under warranty

The guarantee claim expires:

- In case of damages caused by improper operation and utilisation other than intended use.
- In case of incorrect assembly, intervention of unauthorized persons or utilisation of accessories or replacement parts that are not original parts (with exception of commercially available sanding discs).

We strongly recommend the use of genuine spare parts and accessories even after expiration of the warranty period. This is the only way to ensure an impeccable operation of your machine.



Note!

Check the shipment in order to ensure that it is complete in accordance with the chapter „scope of delivery“, and inform your dealer immediately, should any shipment be incorrect.

2 Safety

2.1 General information

Adherence to the safety notes helps to protect against injuries and reduces the risk of an improper utilisation of the machine. Every user of this machine and personnel charged with the assembly, maintenance or repair of this machine must have read and understood the contents of the instructions prior to starting any work.

2.2 Dangerousness of the machine



Attention, danger of injury at running machine

When the machine is started, acceleration takes place (generating a strong jerk). This jerk can be the cause that the operator loses control of the machine in case of improper use.

Hold the machine firmly with both hands at the handle.

2.3 Safety instructions (operation)



Warning! Danger of life!

When crossing and damaging the electrical cable: DANGER due to electric shock!

Perform a safety check prior to each start of the machine:

- Inspect the connecting cables and connectors/pugs for damage and improper connected load.
- Route the electrical cables properly to prevent persons tripping over them.
- Do not switch on the machine until it is in working position.
- Hold the machine firmly with both hands at the handle.
- Switch of the machine immediately when the operation is completed.

2.4 Designated use

Grooving machine KFU 830 is intended to cut welding seams of PVC, linoleum, Polyolefin, rubber, corundum, as well as nap floors.

It is not use to cut any other materials or floors

It is not intended to use outside.

Any other applications can follow in damages or injuries for which the manufacture does not assume any liability.

2.5 Basic safety notes

The Grooving Machine KFU 830 was designed and constructed for its intended use in accordance with the generally approved rules of technology, the industrial safety and accident prevention regulations, and the directive for the safety of machines of the EC.

- Certain dangers may be occurring during the operation of the machine despite all safety and security measures and facilities. This is especially true if
 - improper operation or
 - improper applicationare the cause.
- Failing to adhere to the operation instructions, in particular to the safety notes, will create danger of injuries or even of fatal injuries as also danger of damage to physical assets.



Warning, Danger of electrical shocks

Do not use damaged lines and plugs.

The machine may be operated only in a technically flawless condition and with all safety facilities fully operational.

- The parts of the machine that rotate with high rpm. Are protected by protection measures against accidental contact respective introduction of hands.
- At some building sites, especially in buildings where the power mains and the fuses are not known, a commercial FI safety plug must be used for safe operation of the machine.

2.6 Prerequisites for the user

The users of the machine are required to

- be instructed with the operation of the machine,
- be familiar with and able to execute the operations required for the handling and assembly of the machine,
- be aware of and know the applicable safety regulations for the operation of such machines and adhere to these (cf. The chapter "Preliminary marks"),
- be informed about possible additional local (national) regulations (e.g. with respect to safety facilities),
- be informed about potential threats and dangers arising from the operation of such machines.

2.7 Inspection with accordance with VBG 4 § 5 (1) Nr. 2

The user is responsible for ensuring that the machine is inspected with respect to its proper operation in intervals of 6 months. The inspection may only be executed by a skilled electrician or by personnel that has been trained in electrical skills, provided that suitable measuring and test equipment is used.

2.8 Safety notes: Noise



The measured noise value above 85 dB(A)

The noise that is created during the operation of the machine depends on many factors. All the possible application types and the local regulations, such as the size of the rooms and the features of the ground affect the development of the noise.

2.9 Danger of cut



Caution! Danger of cut by sharp edges while mounting the blade!



Attach the blade carefully.

While attaching or changing of the sanding disc wear protective gloves.

3 General instructions for the user

3.1 Scope of delivery



Note!

Control the completeness of the delivery according to chapter "Scope of delivery" and complain a faulty delivery immediately to your trader.



Grooving machine KFU 830

Carbide blade (mounted)

Metal case

Allen key size 2,5

Allen key size 3

Allen key size 5

jar wrench size 10/13

Operation Manual

3.2 Special accessories



diamond blade 130mm
for corundum safety floors



For the use with the bag
Without vacuum cleaner:

Bag
Holder for the bag
Blower wheel

3.3 Disposal

The disposal of the packaging and the electric accessories is carried out according to the regulations for the handling with rubbish.

The cardboard is usable again and can be used as a camp container. We recommend keeping the cardboard for possible back delivery for continuous examination according to VBG 4 §5 (1) No. 2 or repair.

3.4 Dimensions / Weight / Technical details

Total weight:	4,5 kg
Dimensions:	21 x 19 x 21 cm
Technical details:	Power: 230 V / 830 W / 3,8 A / 50-60 Hz
	Rotation: 5000 rpm
	Blade: Ø 130 mm, 3,3 mm, 12 teeth

4 Assembly

The Grooving machine KFU 830 is delivered ready for use.
The carbide blade is mounted.

5 Transport

In many cases it is inevitable to transport resp. carry the machine to the point of utilisation. Due to the low weight and the manual measurements no instruction references are required for this.



Caution, Fragile!

Do not throw the machine and do not transport it without securing it onto the load area.

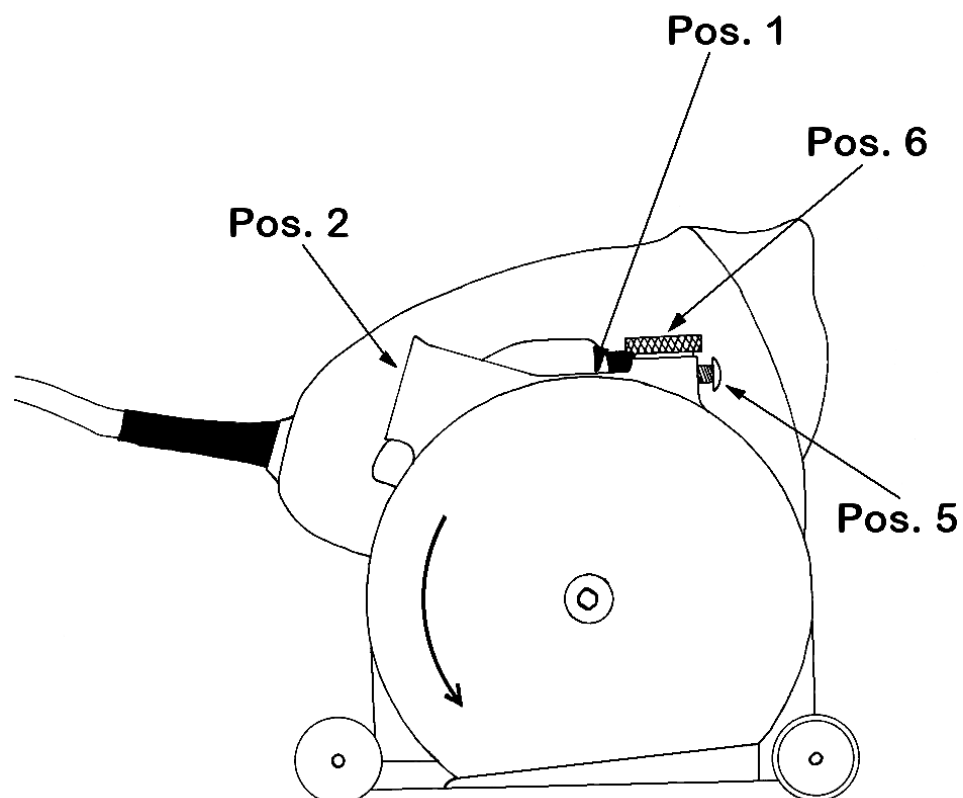
6 Operation

6.1 Preparing the machine

6.1.1 Adjustment of cutting depth

The grooving machine KFU 830 is delivered with cutting depth ± 0 .

For adjusting loose screw pos. 5 and turn knurled nut pos. 6 clockwise till you get the required grooving depth. **Please note that one turn means 1mm cutting depth.** Afterward fix screw pos. 5.



Cutting depth



Cutting depth should be adjusted in accordance to the floor manufacturer's instructions. As a general rule we recommend a cutting depth of $\frac{2}{3}$ to $\frac{3}{4}$ of floor covering. After adjusting cutting depth we strongly recommend grooving a sample material first; for that fixes floor covering with double-sided adhesive tape.

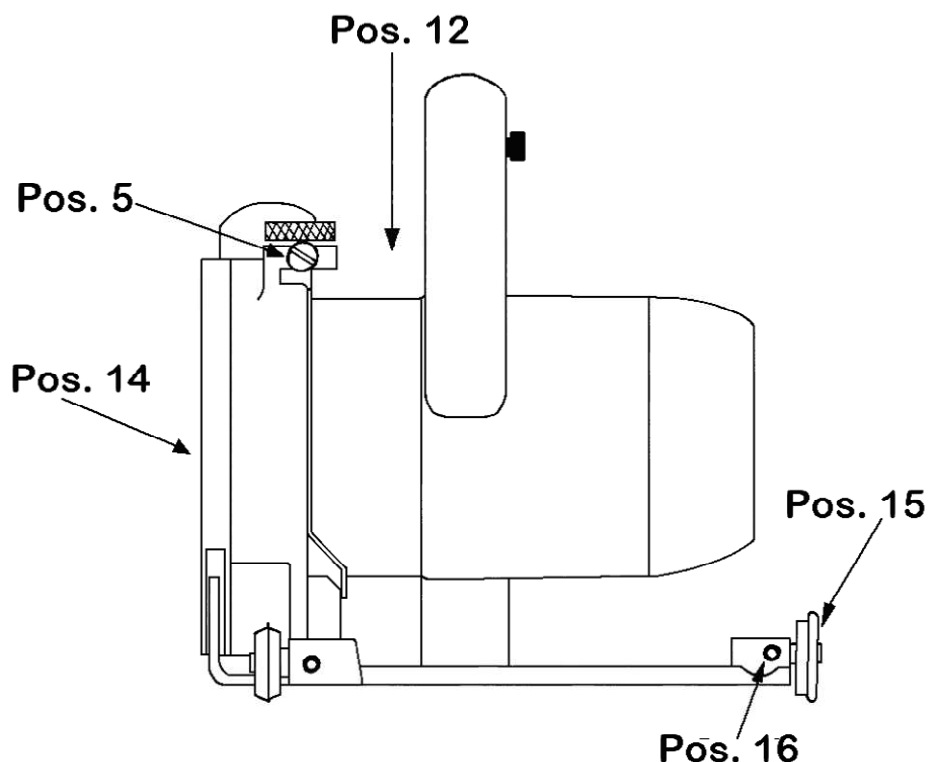


Change cutting depth to ± 0 again

Loose screw pos. 5. Set grooving machine on an even surface, holding the handle and press the machine housing down. Fix screw pos. 14 with socket wrench and turn knurled nut pos. 6 anti-clockwise till the blade is lifted above the surface.

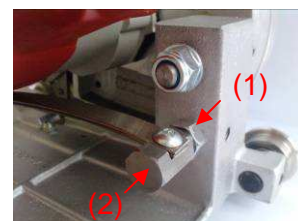
6.1.2 Adjustment of side wheel

For cutting nap floors you can change side wheel pos. 15 to set it between two nap lines. Loose screw pos. 16 and pull roller axle to the required position. Fix screw pos. 16 again.



6.1.3 Adjustment of the spring force

The spring tension for lifting of the engine can be shifted in the strength. Moreover you open the hexagonal nut M8 (1) and unscrew the Spring adjustment screw (2). Fix afterwards the Spring adjustment screw again with the hexagonal nut.



6.2 Starting the machine

Connect the machine to the power supply (pos. 9). Put the grooving machine with front tracking roll pos. 7 and back wheel pos. 8 in pre-cut seam, between two floor covering lanes – align the machine with the grooving line.

Connect the tube of a vacuum cleaner to the ejector pipe to ensure optimal chip vacuum.

Hold the groover by the handle with one hand and press locking button pos. 10 together with the switch ON button pos. 11 to start the machine. Keep switch ON button pos. 11 pressed during work. Push machine chassis down as far as it will go and push grooving machine with constant speed forward pos. 13.

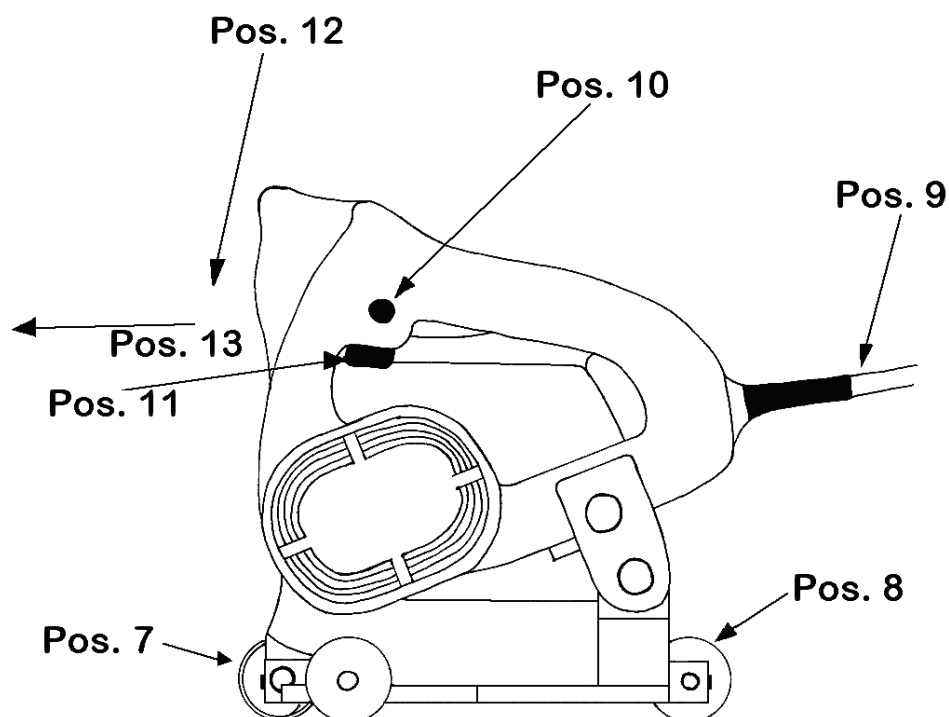
The machine can be pushed forward easily and straight along the seam with tracking roll and back roll.

At the end of the line, switch OFF the machine by release handle and button pos. 11.

Caution! The grooving blade runs out!



Attention: Test grooving result on sample floor covering!



Attention, danger of overload by improper use!

No excessive pressure may be exerted on the machine.
Do not lie with full body weight on the machine.



Vacuum

For an optimal vacuum of chips we recommend to add vacuum cleaner to the ejection port.

6.3 Changing of grooving blades



Switch OFF the machine and disconnect it from the power supply.



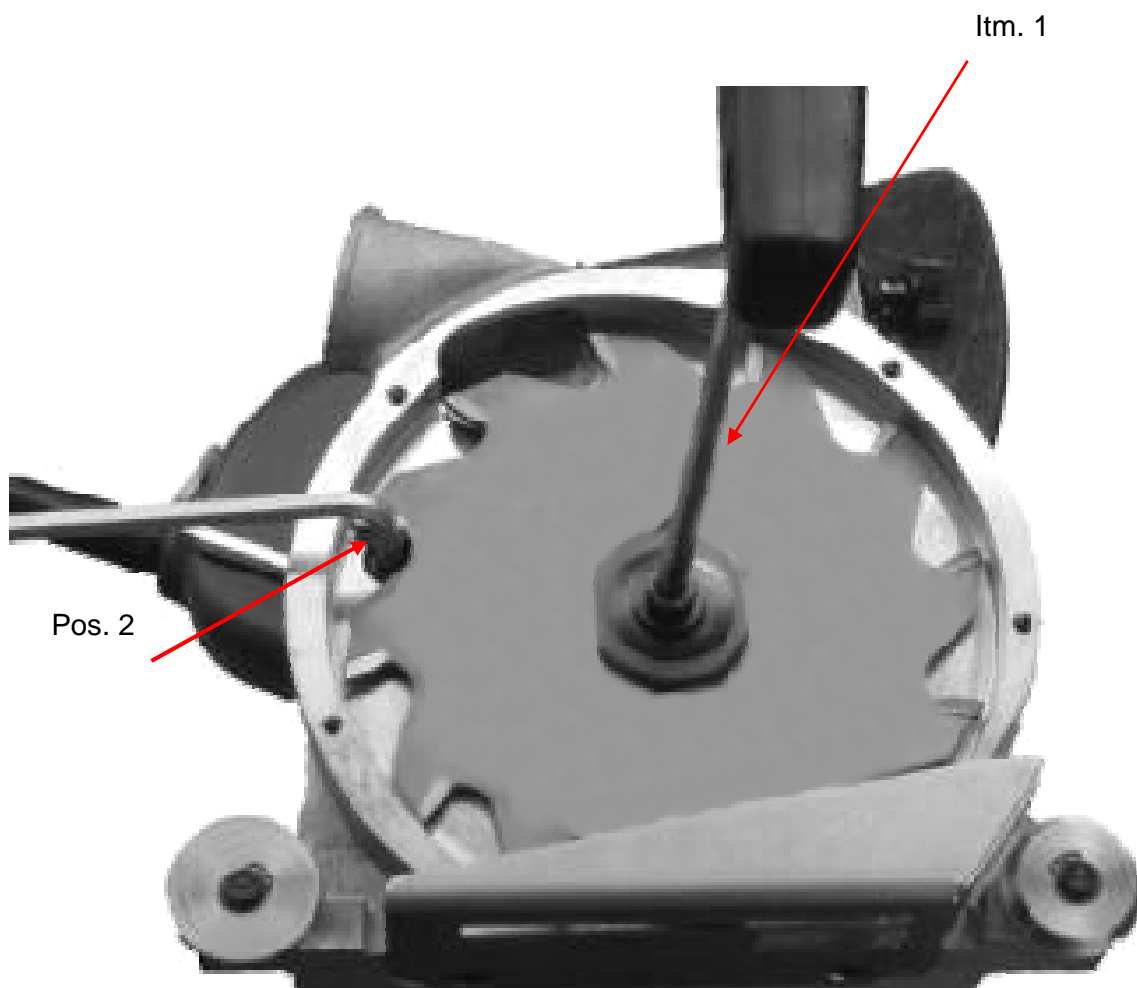
Caution! Risk of injuries through cuts!

Use work gloves when changing blades.

For changing the grooving blade, loose 4 screws at the blade cover (74.00040) and remove it. To remove the blade loose internal screw itm. 1 and at the same time lock the blade by fixing left outer hexagon screw with socket wrench itm. 2. Remove screw itm. 1 and exchange grooving blade (compare itm. 3). Check that the cutting blade revolves freely. Refit the blade cover.



Attention! Take care of the correct position of the blade when add the new one!





Corundum safety floors

When grooving corundum safety floors we recommend using diamond blade no. 16.13690.



When changing the blade

In case of wider a grooved seam respectively frayed edges we recommend to exchange the blade which got possibly blunt. Please compare 6.3.

6.4 **Cleaning and maintenance**



Before cleaning switch OFF the machine and disconnect the machine.

We recommend to clean the KFU 830 after each use – remove blade cover und clean grooving blade and housing, as well as ejector pipe (and possibly used dust bag). Once a week respectively depending to the frequent use we recommend to clean grooving machine KFU 830 with compressed air. For an optimal grooving result we recommend to clean front and back leading rolls (pos. 7 and 8) from remainders of adhesive or similar.

E Annex E: Spare Parts List Grooving machine KFU 830

E. 1 Ordering details for spare parts

To ensure the delivery of the correct spare parts we would like to ask you to identify the requested spare part as detailed as possible:

- in accordance to the explosion drawing please identify the spare part with item no.
- in accordance to the spare part list identify the spare part with name

E. 2 Example

Needed part **Grooving blade**

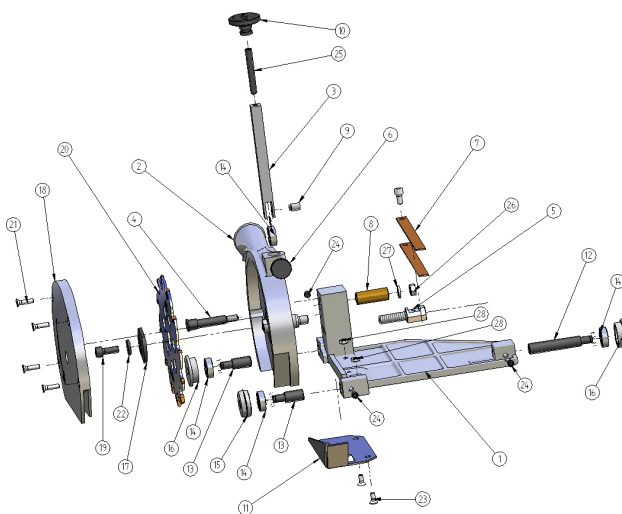
Working steps:

1. Search for the number of the needed part in the picture (explosion view):
for this example: **20**
2. Identify the correct description of the needed part in the text (legend) of the spare parts list: for this example:

1613680 Grooving blade

3. The complete order text is:

Description	Order number	Quantity
Grooving blade	16.13680	1



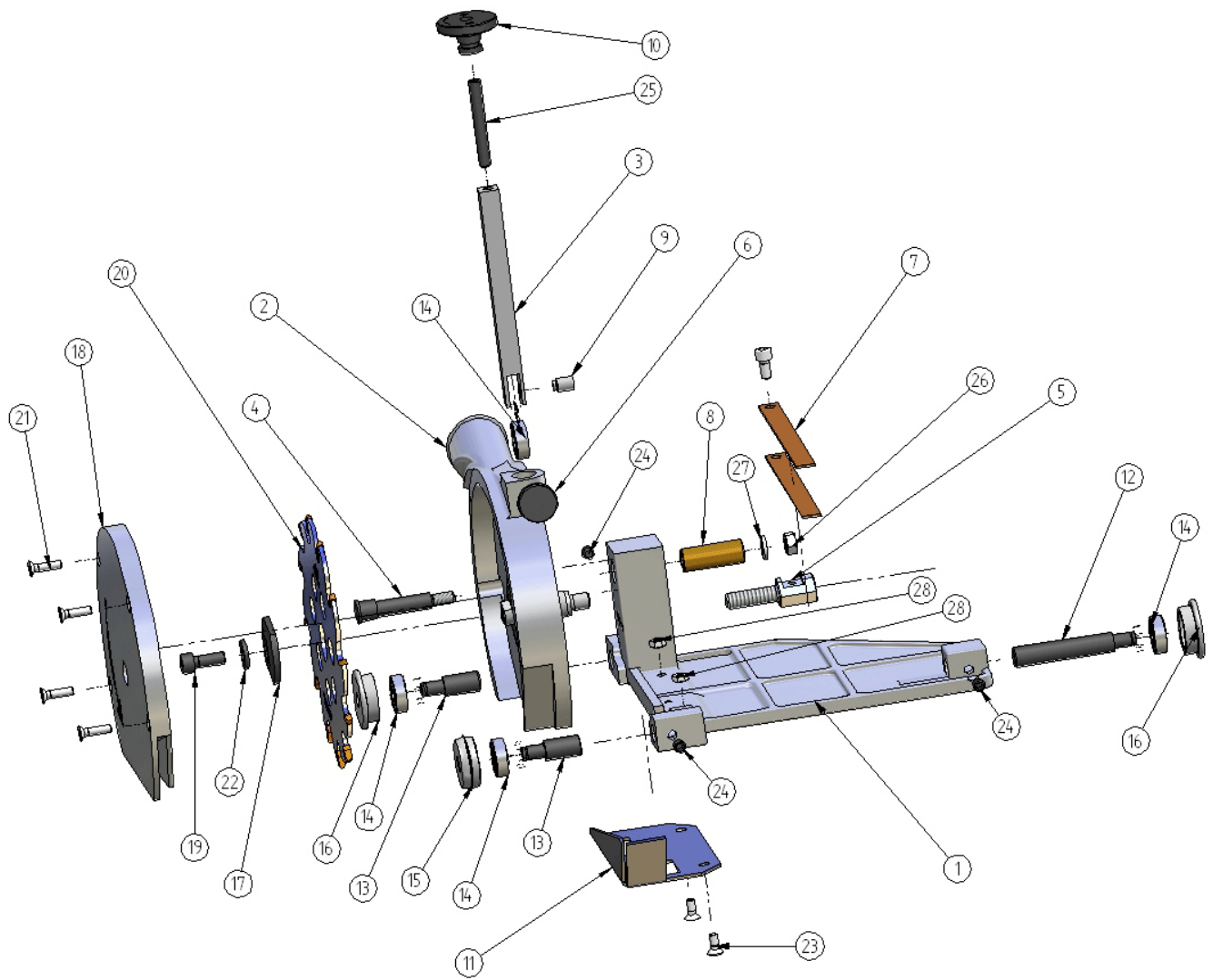
E. 3 Ordering address

Address your spare parts order to:

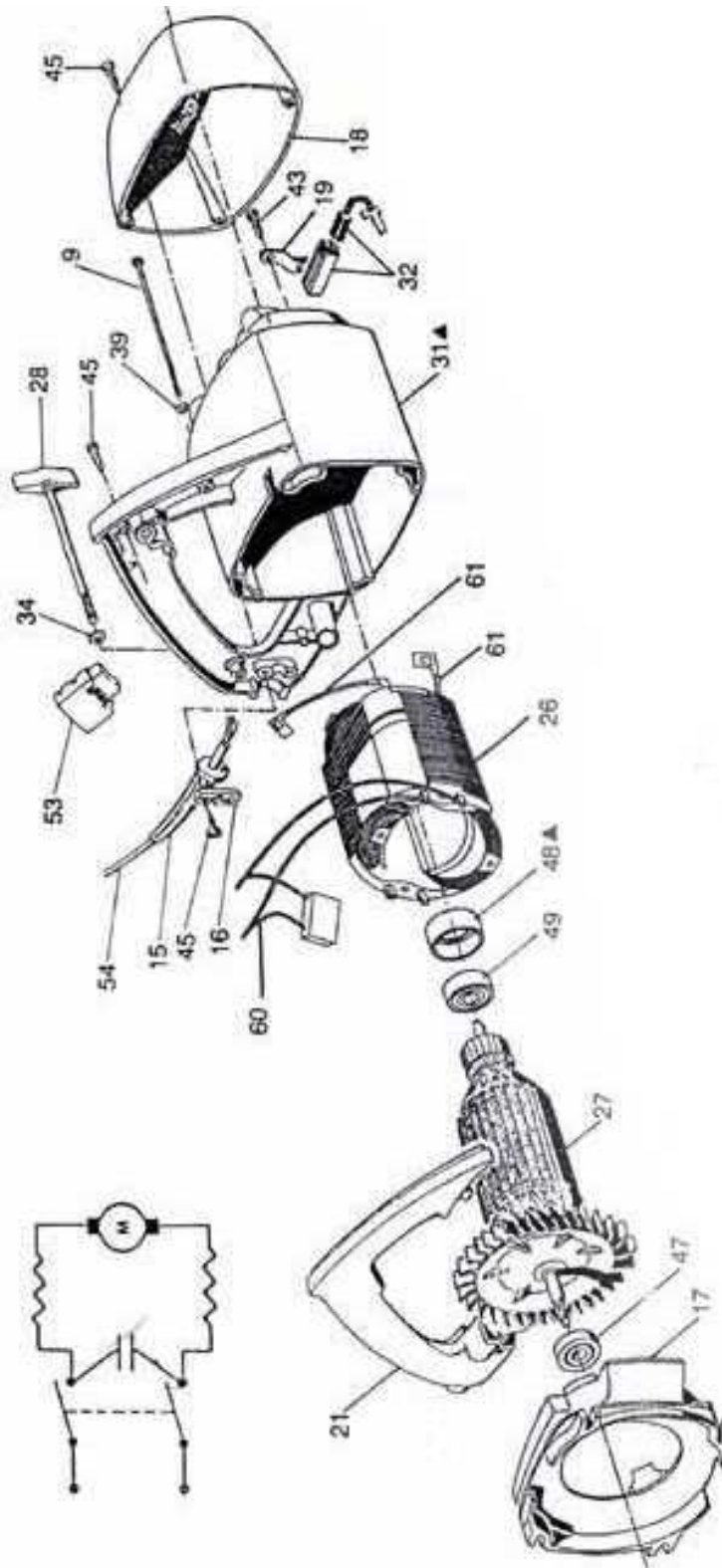
Janser GmbH
Böblinger Str. 91
71139 Ehningen
Deutschland

Telefon: 07034 / 127-0
Telefax: 07034 / 8838
info@janser.com
http://www.janser.com

E. 4 Exploding view machine



E. 5 Exploding view engine



E. 6 Spare Parts List Grooving machine KFU 830

Itm.	Article	Description
<u>Machine</u>		
1	7400200	Grundplatte Fahrgestell
2	7400030	Fräsblattgehäuse mit Saugstutzen
3	7400090	Tiefeneinstellung
4	7400082	Achse Drehpunkt
5	7400075	Federeinstellschraube
6	7400021	Feststellrändelschraube
7	7400083	Federstahldämpfung
8	7400085	Hülse für Drehpunkt
9	7400092	Kugellagerbolzen
10	7400020	Rändelmutter Tiefeneinstellung
11	7400230	Bodenschutzabdeckung Fräsblatt
12	7400170	Achse verstellbar (lang)
13	7400190	Achse verstellbar (kurz)
14	7400160	Kugellager
15	7400220	Nahtführungs- / Messerrolle
16	7400150	Nut- und Stützrolle
17	7400130	Fräsblattspanscheibe
18	7400040	Fräsblattdeckel
19	5620616	Schraube
20	1613680	Hartmetallfräsblatt
21	5610416	Senkschraube
22	5650612	Scheibe
23	5610410	Senkschraube
24	5680606	Gewindestift
25	5680645	Gewindestift
26	5640601	Sechskantmutter
27	5650612	Scheibe
28	5640401	Sechskantmutter
<u>Engine</u>		
	- Please order with the itm. no. -	

Declaration of conformity

We declare ourselves solely responsible for this products conforming with the following standards or standardized documents:

DIN VDE 0740; CENELEC HD 400 and IEC 745 and accidents prevention regulation VBG 7j.
In accordance to regulations: 76/889/EWG and 87/308/EWG respectively EN 55014 = DIN VDE 0875 fitted with noise suppression.

The noise is measured by IEC 59 (CO) 11, IEC 704, DIN 45635 part 21, NFS 31-031.

The noise level at work can exceed 85 dB(A); noise protection is necessary.

Name:	Grooving machine
Model:	KFU 830
Item no:	223920800

Janser GmbH
Böblinger Str. 91
71139 Ehningen

Ehningen 19.05.2014

.....
valid without signature